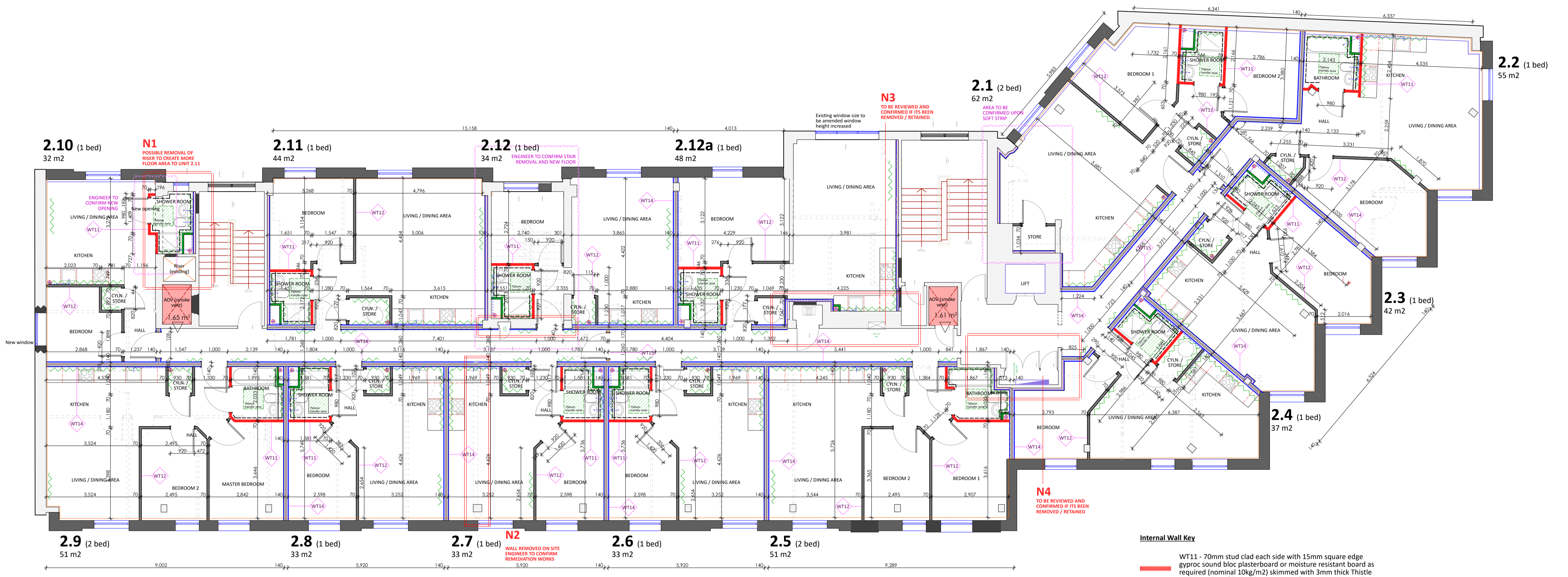
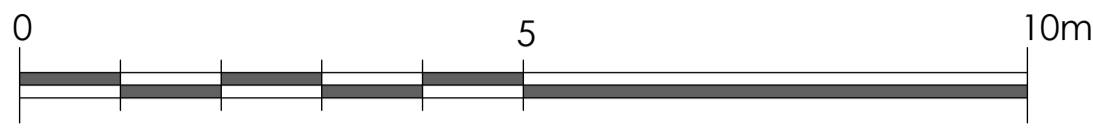
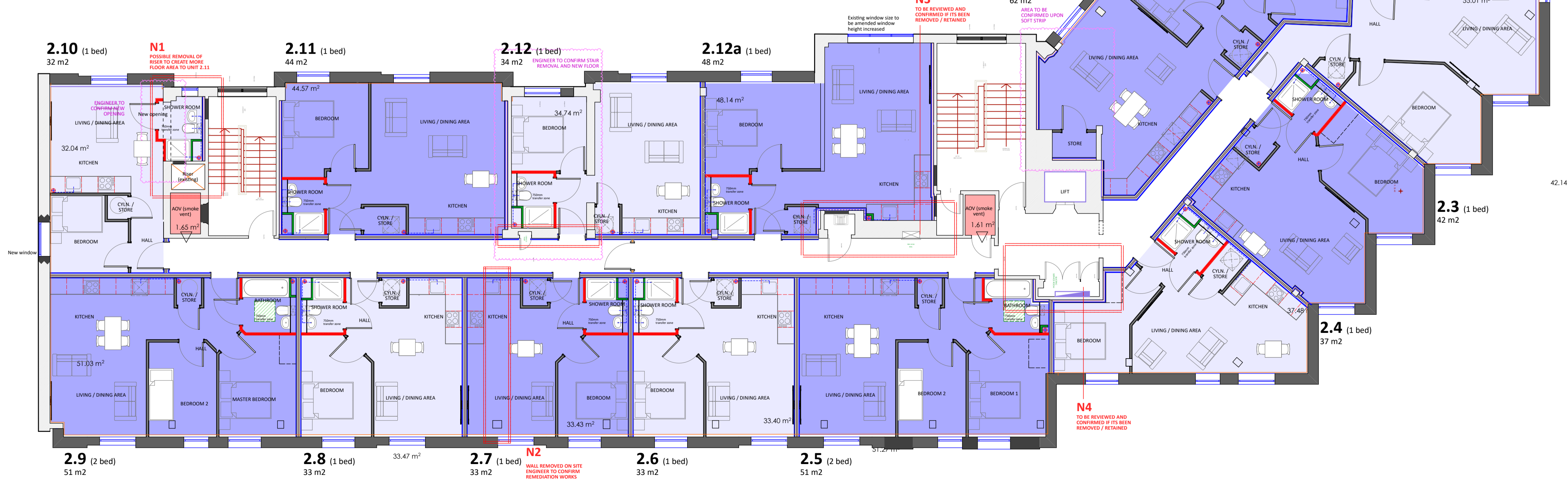


RAINES HOUSE - WAKEFIELD

NOTES
ALL WORK TO BE CARRIED OUT IN ACCORDANCE WITH THE BUILDING REGULATIONS AND THE REQUIREMENTS OF THE LOCAL AUTHORITY.



GA PLAN SECOND FLOOR - SCALE 1:100



Internal Wall Key

- WT11 - 70mm stud clad each side with 15mm square edge gyproc sound bloc plasterboard or moisture resistant board as required (nominal 10kg/m²) skimmed with 3mm thick Thistle Multi Finish. In filled with 25mm Knaf Crown Partition Roll or mineral wool batts (density 10kg/m²)
- WT12 - 70mm stud clad each side with 15mm square edge gyproc sound bloc plasterboard (nominal 10kg/m²) skimmed with 3mm thick Thistle Multi Finish.
- WT13 - 38mm stud clad single side with 15mm square edge plasterboard skimmed with 3mm thick Thistle Multi Finish. To be 18mm plywood lined within kitchen areas.
- WT14 - Two Gyframe 48 S 50 'C' Stud framework braced at max. 1200mm centres. Studs at 600mm centres. Minimum 50mm Isover Acoustic Partition Roll (APR 1200) in cavity (cavity width 137mm, 2no. 15mm Gyproc SoundBloc to both sides, maximum partition height 6200mm, Minimum 60mins fire rating.
- WT14a - One Gyframe 48 S 50 'C' Stid framework braced at one side. Internal finish to be 15mm square edge gyproc soundboard skimmed with 3mm thick Thistle Multi Finish. Cavity between studs to have 50mm Isowool APR 1200, minimum 60mins fire rating.
- WT15 - 70mm stud clad each side with 2no. layers 15mm square edge gyproc fireboard skimmed with 3mm thick Thistle Multi Finish. Cavity between studs to be 50mm Isowool APR 1200, minimum 60mins fire rating.
- WT16 - 70mm stud with Gyframe RB1 Resilient Bar 600mm to one side. Internal finish to be 15mm square edge gyproc soundboard skimmed with 3mm thick Thistle Multi Finish. Cavity between studs to have 50mm Isowool APR 1200. To be confirmed with acoustic consultant.
- 100mm block wall
- Moisture resistant plasterboard
- Position of patress
- Position of service runs and pipes at ceiling level of the floor below
- Position of above ground drainage runs
- Position of svp's

All partitions adjacent to kitchen, bathroom/shower rooms, stores/cylinder cupboards and 600mm either side of entrance doors to incorporate 18mm plywood lining.

Existing drainage position and connections to be checked on site as no drainage survey or service positions have been established, service runs to be confirmed by specialist sub-contractor/consultant

ALL KITCHEN AND BATHROOM LAYOUT INDICATIVE FOR DETAIL PLEASE REFER TO SUPPLIERS INFORMATION

REV	DESCRIPTION	BY	CHKD	DATE
E	RHS AGV removed in accordance with SPL Fire Engineering fire strategy.	IR		25/01/22
D	Plans updated to suit the new elevation and window positions. Sizes amended to suit panel removal	IR		16/11/21
C	2 bedroom units ensuite and halls removed. Unit 1.1 layout amended and units numbers decreased and client instructions.	IR		26/11/21
B	Unit 2.5 kitchen location amended.	IR		12/08/21
A	Internal layout amended further to comment.	IR		09/08/21

LOROC ARCHITECTS

25A PARK SQUARE WEST, LIVERPOOL, L3 5PW
3RD FLOOR, 86 - 90 PAUL STREET, LONDON, EC2A 4BE
T: 0113 233 7755
W: www.loroc.co.uk

CLIENT	PROSPECT ESTATES LIMITED		
PROJECT	RAINES HOUSE WAKEFIELD		
TITLE	GENERAL ARRANGEMENT Setting Out Information PROPOSED SECOND FLOOR		
DRAWING NO.	1571-203(BR)	REVISION	E
SCALE	1 : 75/100 @ A1	DATE	MAR 21
DRAWN BY	IR	CHECKED BY	
PURPOSE OF ISSUE	<input type="radio"/> PLANNING <input type="radio"/> BUILDING REGS <input type="radio"/> TENDER <input type="radio"/> COMMENT <input checked="" type="radio"/> INFORMATION <input type="radio"/> CONSTRUCTION		

THIS DRAWING IS COPYRIGHT AND THE INTELLECTUAL PROPERTY OF LOROC ARCHITECTS LIMITED. THIS DRAWING MAY NOT BE REPRODUCED IN WHOLE OR IN PART WITHOUT WRITTEN AUTHORITY. NO DIMENSIONS TO BE SCALED FROM THIS DRAWING. ALL DIMENSIONS TO BE CHECKED ON SITE PRIOR TO COMMENCEMENT OF WORKS AND ANY DISCREPANCIES REPORTED TO THE ARCHITECT/ENGINEER/CONTRACTOR.